



WPX-PTSA-2R4-48

ClassC+D Type 2 Signal Surge Protector

POE Surge Protector 100/1000M POE+
802.3af (PoE) /802.3at (PoE plus)

2.3 User can't dismantle the fastener of surge protector casually, so as not to affect the normal operation of the product.

2.4 After the surge protector connected to system, once found the system don't work normally. However, it can be worked normally after remove the surge protector, may have problem on choice of surge protector, need to replace it.

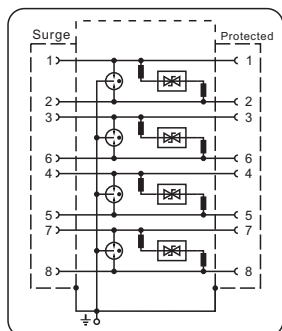


Fig. 1 Circuit Diagram

Description of products

Introduction of the Ethernet Surge Protector, model WPX-PTSA-2R4-48, from Hunan WPX Communication Technology Co., Ltd. The WPX-PTSA-2R4-48 is a cost-effective solution for protecting outdoor Ethernet devices from damaging electrostatic discharge and surges. Since some devices already have robust ESD protection built in, adding the WPX-PTSA-2R4-48 to the installation provides an additional layer of protection to the network.

Product feature

- ✦ Total nominal discharge current (8/20μs) 20kA
- ✦ POE power supply part with thermal protection
- ✦ Low limit voltage
- ✦ Small insertion loss
- ✦ Data transmission rate up to 1000Mbps
- ✦ Small volume, easy installation

Installation and maintenance

1 Installation method

1.1 Firstly, put system signal lines connected to the surge protector's input terminal, and the output terminal connected to the protection devices end. NOT allow the incorrect connection, also need to ensure the RJ45 connector joint part have reliable touch.

1.2 Making the earthing conductor of surge protector connected to the nearest protecting earthing busbar or the equipment's metal shell.

2 Notes

2.1 First, checking the connection between surge protector's earth wire and ground network whether meet requirements.

2.2 Surge protector's enclosure marked IN and OUT, the connection between output terminal and the device to be protected is NOT allowed to be connected incorrectly. Otherwise, it will damage surge protector, and can't protect the equipment effectively.

Caution

DO NOT DISASSEMBLE THE PRODUCT IN CASE THE ELECTRICITY INSIDE!!

Warranty

Kindly Note: The warranty will be void if the products have been disassembled, repaired or modified without WPX's authorization.

Contact Us

Address: 2nd bldg, No. 586, Dongfanghong Middle Road, High-Tech Dist, Changsha, Hunan, China
Tel: +86-731-88650578 88650278
Fax: +86-731-88652153
E-mail: service@hnwp.com
http://www.spdwp.com/



http://www.spdwp.com/

Technical parameters

Model Number	WPX-PTSA-2R4-48
Art No.	692 406
SPD category	Type2
Rated Working Voltage(U ₀)	48V
DC Max Continuous Operating Voltage(U _c)	58V
AC Max Continuous Operating Voltage(U _c)	35V
Max working current (IL)	1A
POE power supply	1, 2, 3, 6 or 4, 5, 7, 8; Total 95W
C2 Total nominal discharge current (8/20μs)(I _{total})	1.2kA
C2 nominal discharge current (8/20μs)per wire (I _n)	0.3kA
Total nominal discharge current C2-PE(I _{total})	20kA
Nominal discharge current per wire C2-PE(I _n)	2.5kA
Voltage protection level wire-wire C2(U _p)	≤120V
Voltage protection level wire-PE C2(U _p)	≤1000V

Dimension (mm)

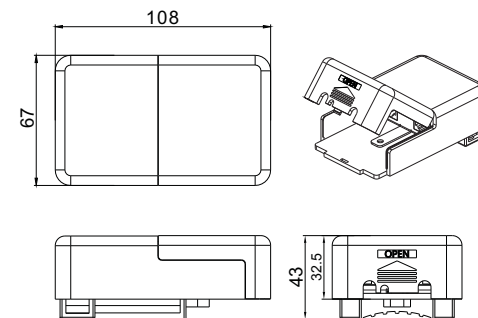


Fig. 2 Dimension

Voltage protection level wire-wire 1kV/usC3(Up)	≤90V
Voltage protection level wire-PE 1kV/usC3(Up)	≤600V
Response Time(tA)	≤1ns
Transmission rate	1000Mbps
Insertion Loss(100MHz)	≤1.0dB
Impedance in series	≤0.5Ω
Protected pin	1/2; 3/6; 4/5; 7/8
Relative Humidity	≤95% (25°C)
Working temperature range(TU)	-40°C---+80°C
Atmospheric Pressure	86kPa...106kPa
Wiring methods	RJ45(shield)
Port numbers	in-1×RJ45 ; out-1×RJ45
Housing material	PC/ABS UL94 V-0
Installation place	Indoor or Outdoor
Degree of protection (IP code)	IP54

Wiring installation

Hardware Overview



Fast Installation

The PTSA-2R4-48 was designed for easy, plug and play installation:

1.Pre-installation preparation

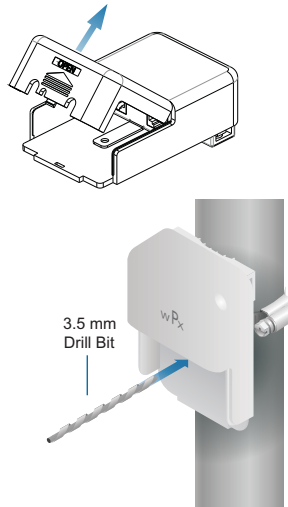
Pole-Mounting:

- ✱ Drill with a 3.5 mm drill bit
 - 1) Metal strap or cable tie ;
 - 2) Screws:ST4.2,(Self-Tapping,L≥16mm)
- ✱ Wall-Mounting:
 - 1) Screws (≤7 mm screw head)
 - 2) M4 machine screw and nut
 - 3) Drain wire (≥2.5mm², ≤ 50cm)



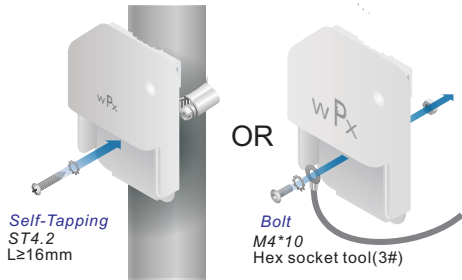
1. Attach the PTSA-2R4-48 to a grounded pole.

2. Drill a 3.5 mm pilot hole into the pole through the center of the Grounding Point of the Surge Protector_WPX-PTSA-2R4-48.



2. Drill a pilot hole into the pole.

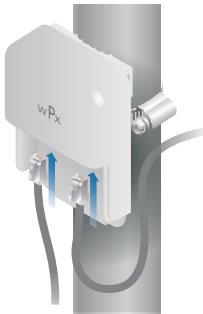
3. Insert the included *Self-Tapping* Screw into the Serrated Washer and pilot hole. Securely fasten the screw to ensure the Grounding Point is bonded to the pole.



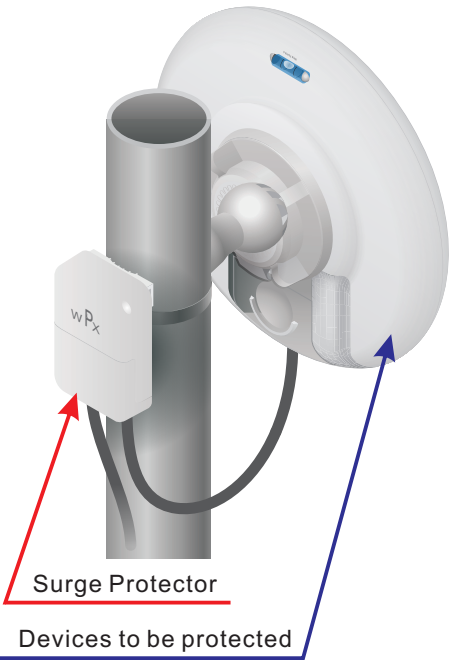
3. Fasten the ground screw.

Connecting Ethernet

Connect two Ethernet cables to the RJ45 PTSA-2R4-48 IN/OUT ports. Then connect one of the cables to the Ethernet device and the other cable to the LAN.

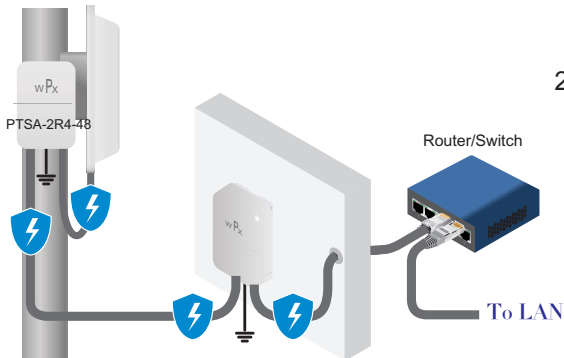


4. Connect the Ethernet cables.



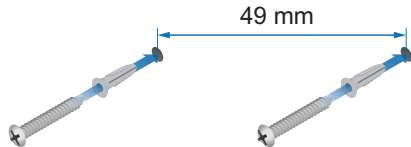
Ideal for Network Equipment

Although this device is equipped with ESD protection. In order to protect outdoor devices, and to meet certain local code requirements, installing the WPX-PTSA-2R4-48 is essential.



Wall-Mounting

1. Secure two screws (not included) to the wall, spaced 49 mm apart.



2. Leave a gap of 3 mm from the screw head to the wall.

